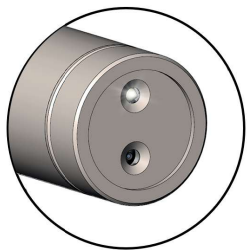
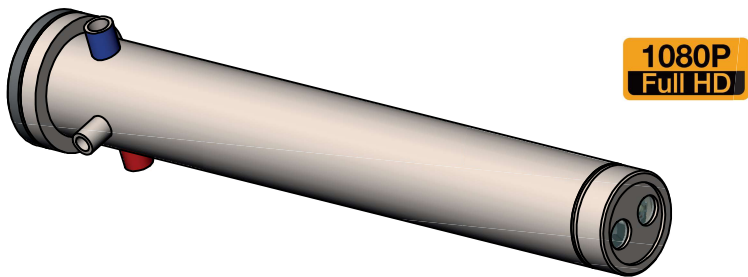
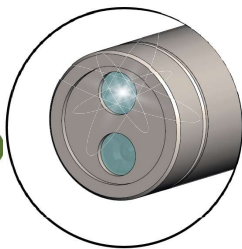


The control box is equipped with a display of temperature + to verify proper endoscope cooling in critical environments.



To inspect the dark areas, the endoscope is equipped with a led lighting system. With or without window.

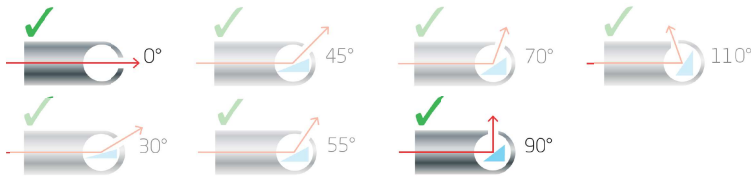


The videoscope HTN-78L CESYCO is equipped with LED lighting and mostly designed to monitor furnaces where light is particularly low or where there is nearly no light. It is used to proceed controls in large high temperature furnaces operating continuously in order to monitor manufacturing processes in real time.

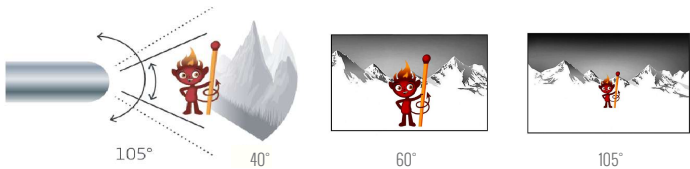
The videoscope HTN-78L provides high quality images which are transmitted through optical lenses. It is equipped with a video camera that displays the images on a screen in the monitoring room. The videoscope HTN-78L is available in different lengths and viewing angles. This videoscope has to be fixed inside the furnace or on the extraction bench. With its air and water-cooled jacket, the videoscope HTN-78L can operate in furnaces with temperatures up to 1 400°C.

Available options



The direction of vision is the axis the endoscope looks towards. It can be axial or lateral. You have to choose your direction of the vision in the table below :



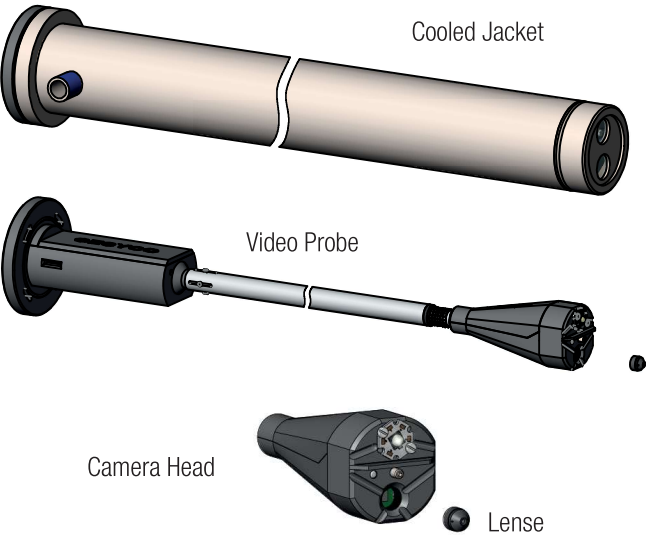
Once your direction of vision is chosen, choose your field of view.



Field of view : angle representing the surface of the monitored area. Bigger is the angle, more panoramic is the vision.

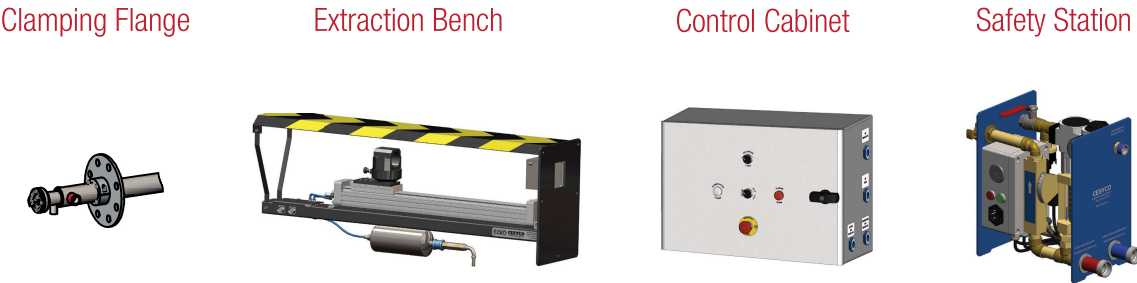
HTN78L	STATIONARY ENDOSCOPE	 78 mm	
High temperature endoscopes design, production, sales and services on site		 1 400°C	

The endoscope is made up of the following elements :



This endoscope must be used with its electrical box or with one of the accessories below.

ACCESSORIES / OPTIONS



Technologies	Image transmission	Digital video IP
	Cooling system	Triple jacket
Using Temperature	From 200°C à 1 400°C	
Dimensions	Diameter	78 mm
	Length	500 mm to 2000 mm
	Weight	3 Kg to 10 Kg
Cooling System	Water	Loop system
	Air	Lost
Inner video camera	CDD size	CMOS RVB 1/3"
	Effective Pixels	1920 x 1080
	Illumination	0.22 Lux
	Full HD Resolution	1080p
Direction of vision	Axial 0° - Lateral 90°	
Field of View	Interchangeable	D 40° = H 36° x V 20°
		D 60° = H 53° x V 30°
		D 105° = H 91° x V 45°
Focus	Focusing ring	From 10 cm to infinity
Connexions	Inlet/Oulet	Water : BSP 1/2"
		Air : BSP 3/8"
Power supply	Electrical Box	100 to 250 VAC 50/60 Hz Video Output RJ45
Accessories	Control and security	Clamping Flange
		Extraction Bench
		Control Cabinet
		Safety Station