



CESYCO



HTACT1

CABINET



Equipment



ESYCO Highlights

- Digital control management.
- Fluid management (air and water).
- Pilot control of the extractor bench.



VIDEO SIGNAL FOCUS

The box combines several essential functions to guarantee optimal, safe endoscope control:

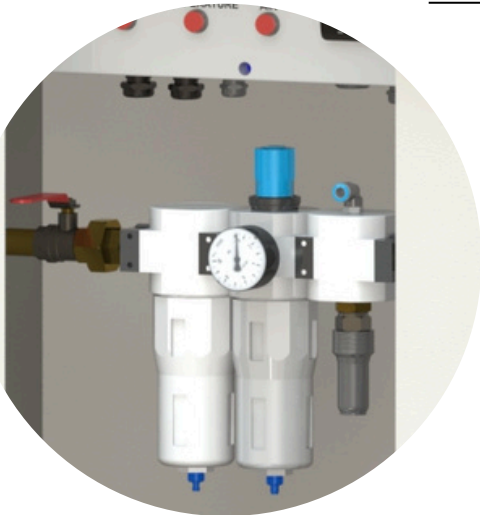
- **Video signal management:** Real-time transmission of images to the control room.
- **Temperature monitoring:** Continuous monitoring of water and internal camera temperature to prevent overheating.
- **Built-in alarms:** Illuminated system to warn of faults (excessive temperature, loss of fluids, etc.).
- **Extractor bench control:** automatic endoscope removal in the event of malfunction.



FOCUS ON FLUIDS MANAGEMENT

The unit continuously monitors and regulates the air and water supply to ensure optimum cooling of the endoscope.

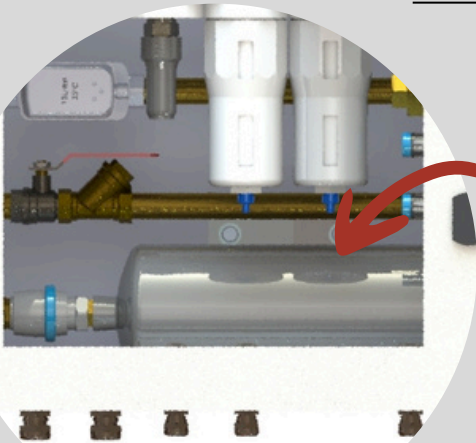
- **Real-time monitoring:** Integrated flow meter, pressure switch and thermometer for precise monitoring of parameters and immediate action to prevent damage from any cause.
- **Advanced air filtration:** filter system (40 μm and 5 μm) to eliminate impurities and protect equipment.



SAFETY AND AUTOMATED EXTRACTION

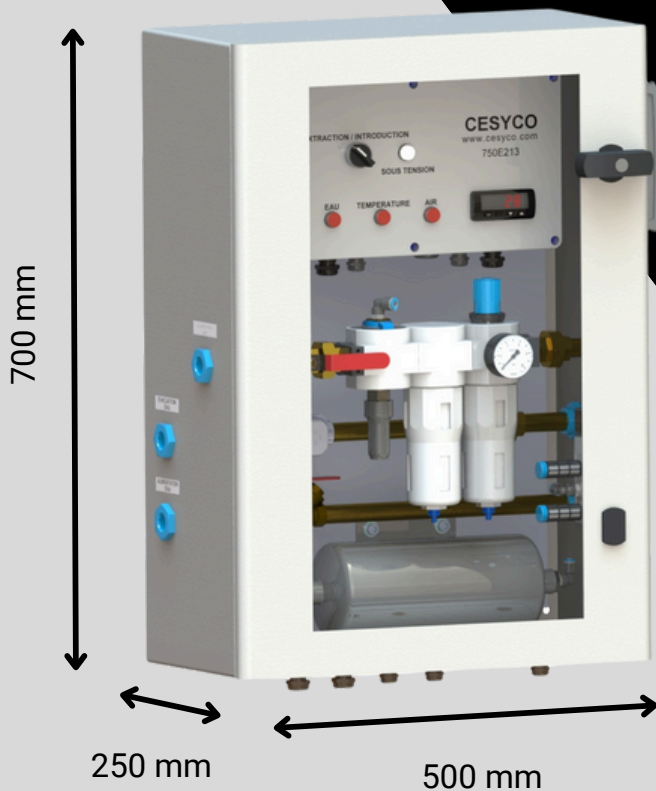
Specifically designed for fixed endoscopes, this electro-pneumatic cabinet ensures optimum management of safety and cooling systems.

- **Safe automatic removal:** in the event of cooling failure, air or power failure, the unit activates the extractor bench. It triggers the pneumatic cylinder, which instantly removes the endoscope from the high-temperature environment using a reserve air cylinder.
- **Flexible mounting:** can be mounted on a wall or bracket close to the bench extractor for secure installation and easy access.



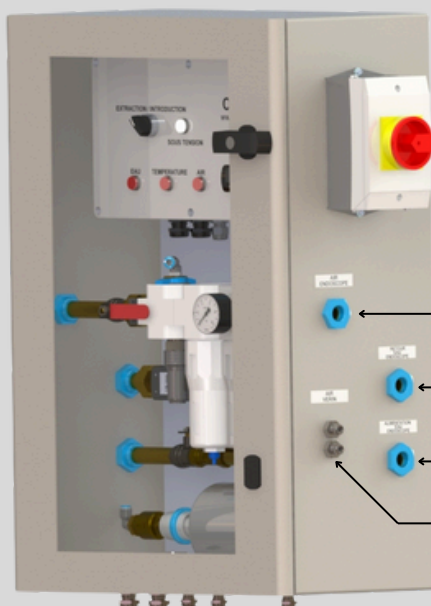
3D SIMULATION FOR OPTIMAL INTEGRATION

To guarantee optimum integration of your equipment, our design office produces 3D simulations adapted to your environment. This modeling enables us to optimize the layout of the cabinet, extractor bench and fluid ducts, to ensure safe operation and optimum accessibility. We help you choose the ideal positioning for an installation perfectly adapted to your industrial constraints.



DIMENSIONS

- Length: 500 mm
- Height: 700 mm
- Depth: 250 mm
- Weight: 50 kilograms



Power switch

Air supply for endoscope

Endoscope water return

Water supply to endoscope

Air supply to cylinder

Alarm	Automatic withdrawal upon default	Water flow
		Air pressure
		Outlet water temperature
		Camera temperature
		Power interruption
Electrical enclosure	Power supply	100-250 V AC 50/60 Hz
Fluids	Water lines	Flowmeter/Thermometer
		Shutoff valve
		Strainer filter
	Air lines	Pressure switch
		Pressure regulator with gauge
		40µm and 5µm filtration line
		Shutoff valve
Hoses	Hoses set	Length upon request