




CESYCO

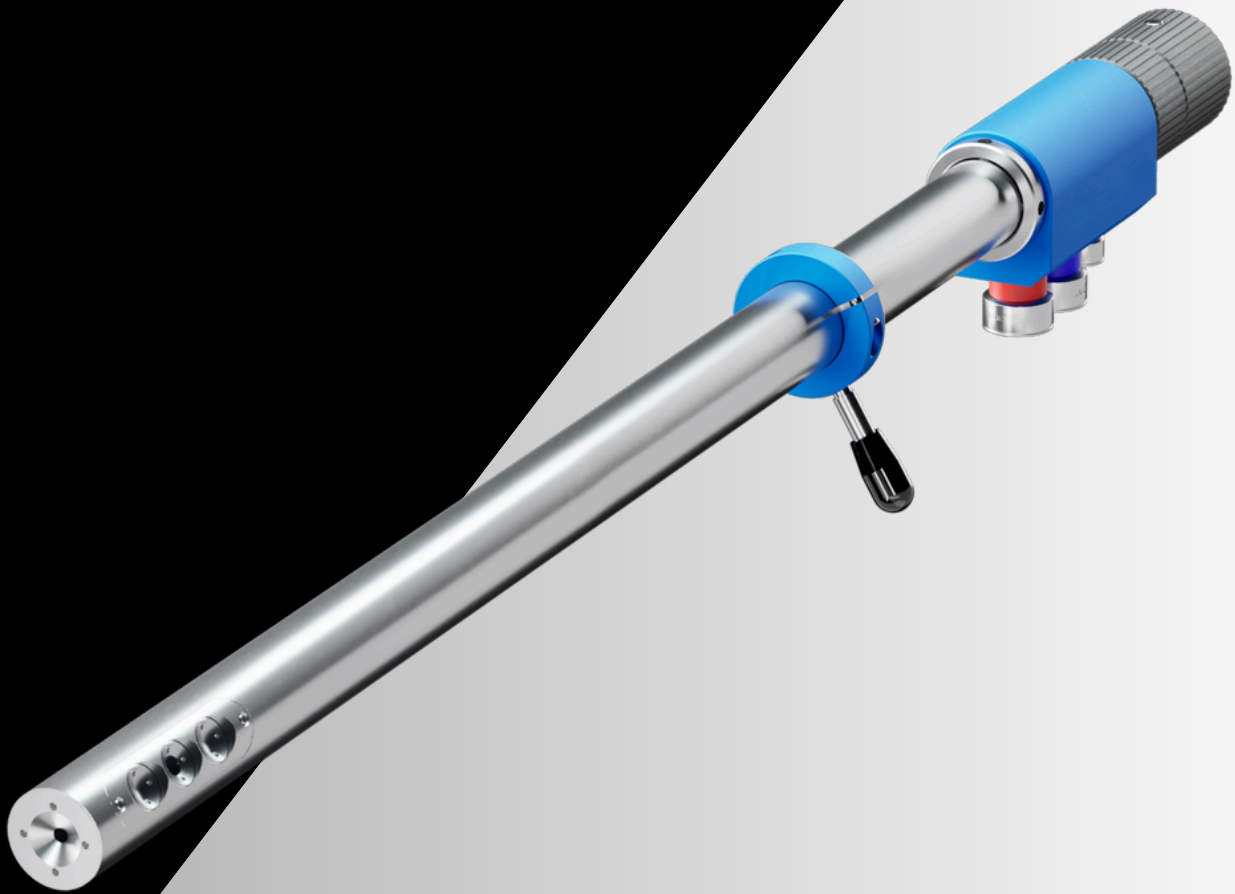


HTN-40

PORTABLE ENDOSCOPE

 40 mm

 1 600 °C



1080p
FULL HD



ESYCO Highlights

- Display several zones simultaneously
- Portable endoscope for ponctual inspections
- Lightweight, small diameter, easy to handle



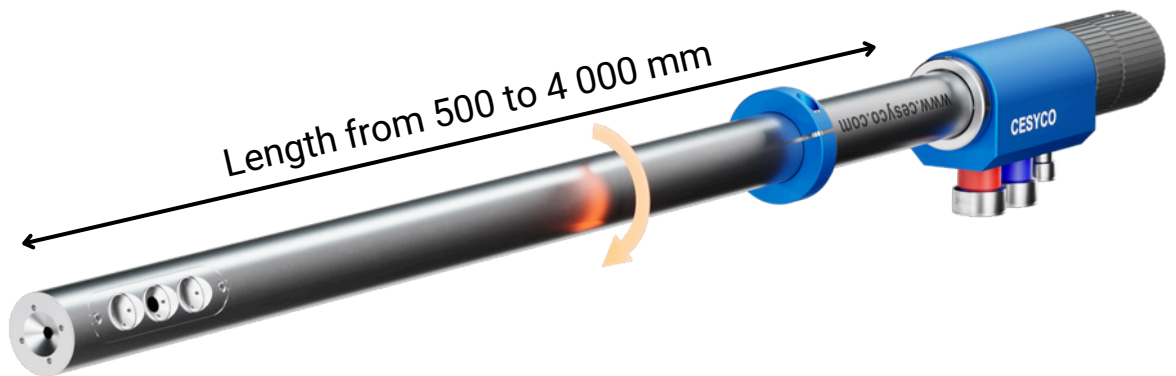
LIQUID & AIR COOLING SYSTEM

- Enabling the HTN40 to work in up to 1600°C environments.
- Water cooling (Vortex effect): Protects the digital module and distributes heat evenly
- Air cooling (Venturi effect): Preserves and continuously cleans the front lens, even at high temperatures.



360° ROTATION

- View elements all around without turning the air and water housing.



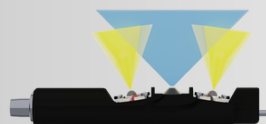
LED LIGHTING & INTERCHANGEABLE HEAD

- Interchangeable camera heads with various field-of-view and angle configurations, allowing you to adapt to different inspection needs. Easily switch heads using the dedicated tool provided.



TWIN VISION

See the side and front of the furnace at the same time.



LED LIGHTING

Two leds to assist the camera in dark environments.

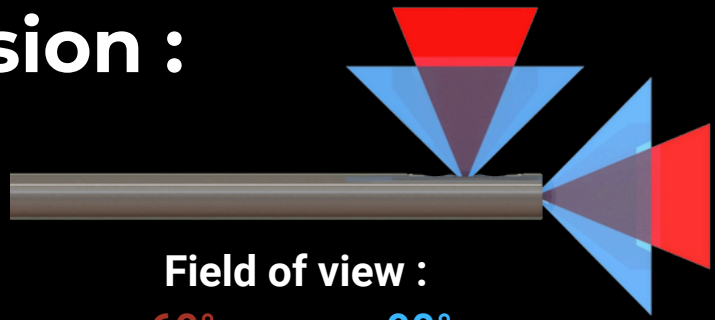


SPECIFIC ANGLE OF VISION

Multiple angles available from 0° to 90° direction camera heads.



Vision :

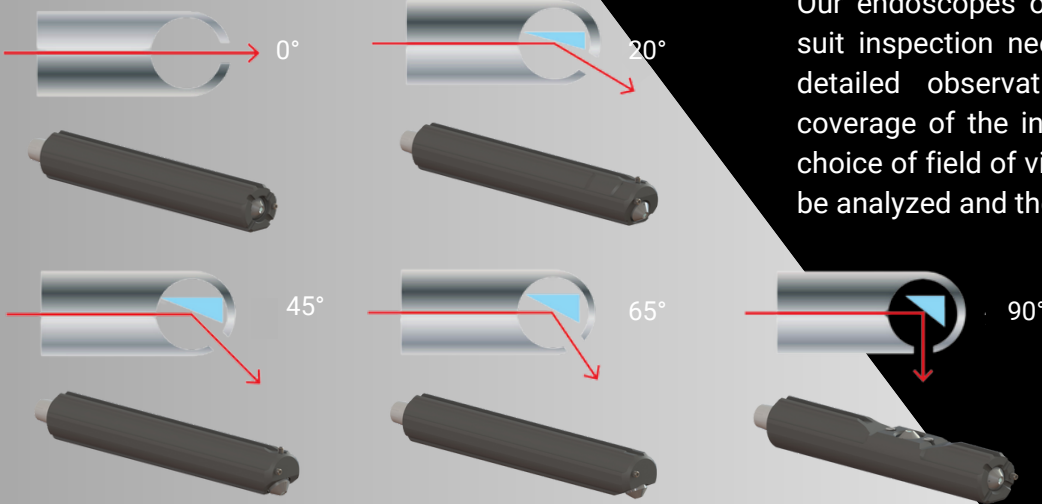


Field of view :

60° or 90°



Our endoscopes offer two fields of view to suit inspection needs: 60° for more distant, detailed observation, and 90° for wider coverage of the inspected environment. The choice of field of view depends on the area to be analyzed and the inspection requirement.



Equipments :

CONTROL BOX

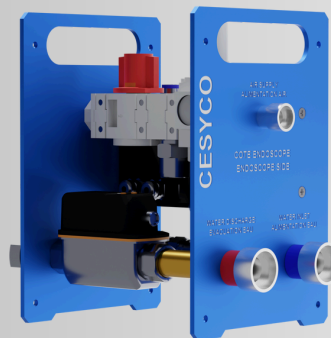
Indispensable



Efficient signal transmission via RJ45 cable (or HDMI) for high-quality real-time inspections.

SAFETY STATION

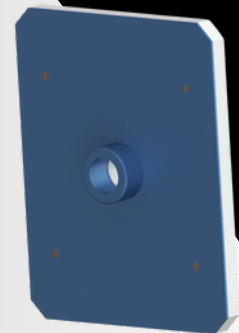
Recommended



Designed for fluid management to ensure the safety of portable endoscopes during spot inspections.

THERMALSHIELD

Advised



A dual-layer accessory with an aluminum plate and ceramic fiber insulation to protect against high temperatures.

Technologies	Image transmission	IP digital video
	Cooling system	triple-layered sheath
	Lighting	Lateral LEDs
Dimensions	Diameter	40 mm
	Length	500 mm to 4000 mm
	Weight	7 kg to 15 kg
Cooling system	Water	Closed circuit
	Air	Lost
Hydropneumatic distributor	Rotation	Total 360 Degrees
Internal IP camera	Valuable pixels	1920x1080
	Resolution	1080p
Direction of sight	Axial and lateral	0°, 20°, 45°, 65°, 90°
Fields of vision	Interchangeable	D60° = H45° x V26°
		D105° = H91° x V45°
Focus	Adjustment tool	From 100 mm
Connections	Inlet/Outlet	Water: BSP 1/2"
		Air: BSP 3/8"
	Electrical enclosure	100 to 250 VAC 50/60Hz
		RJ45 video output (or HDMI)
Equipments	Control and security	Control box
		Safety Station
		Flange and thermal shield

