



CESYCO

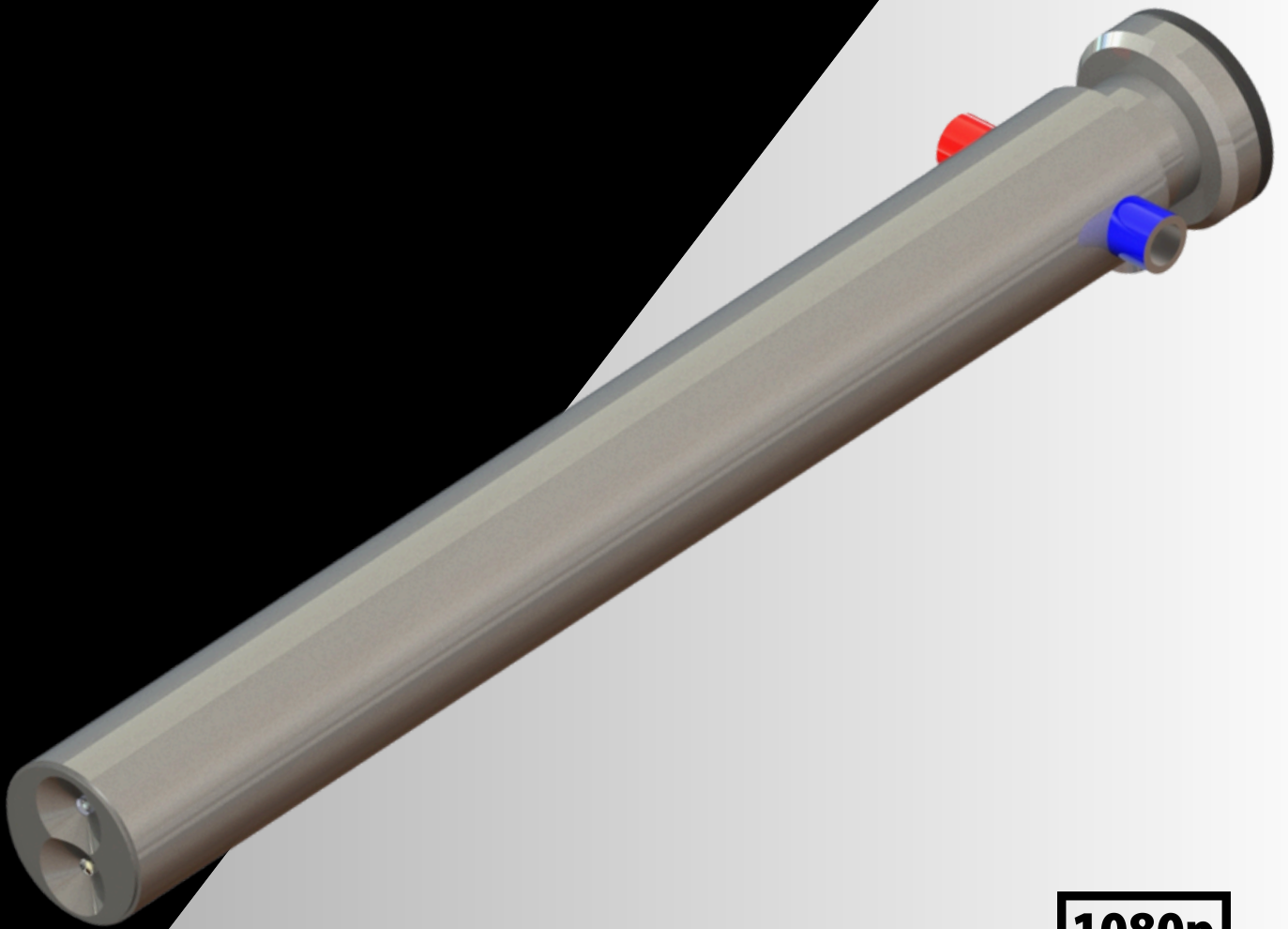


HTN78

FIXED
ENDOSCOPE
WITH LED

78 mm

1 400°C



1080p
FULL HD



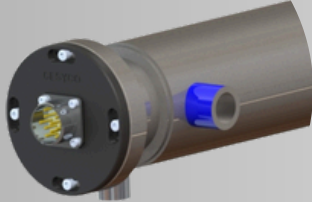
ESYCO Highlights

- 24/7 Continuous Monitoring: ideal for critical industrial processes requiring permanent control.
- High definition: Outstanding image quality for detailed analysis, especially in large volumes.
- Designed for environments with little or no light



ADVANCED COOLING SYSTEM

- Water cooling (Vortex effect): Protects the video module and dissipates heat evenly.
- Air cooling (Venturi effect): Continuously protects and cleans the front lens, even at high temperatures.



STRUCTURE AND THERMAL RESISTANCE

- Materials: Triple sheathing for excellent corrosion and heat resistance.



OPTION

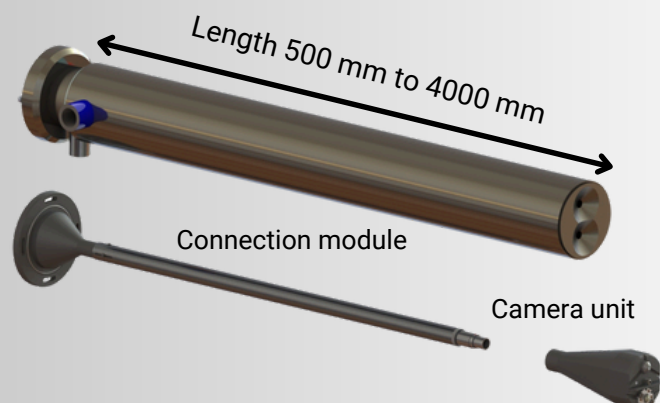
- Window: Designed for specific applications, the sapphire porthole seals the endoscope, preventing air infiltration into the furnace. It is secured with a captive nut to guarantee secure installation.

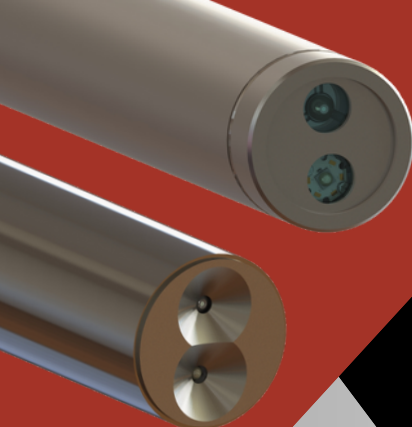


COMPOSITION



- LED: Integrated at the end of the sheath, next to the camera, it offers optimum visibility in dark environments. This light source improves image quality and guarantees precise inspection in low-light conditions.





Vision:

3D SIMULATION FOR OPTIMAL INTEGRATION

In order to guarantee an optimum choice for the endoscope head (direction and field of vision), our design office carries out a 3D simulation of the industrial environment concerned.



Fields of vision:

60° or 90°

Our endoscopes provide two fields of vision adapted to inspection needs : 60° for distant and detailed observation, and 90° for wider coverage of the inspected area.

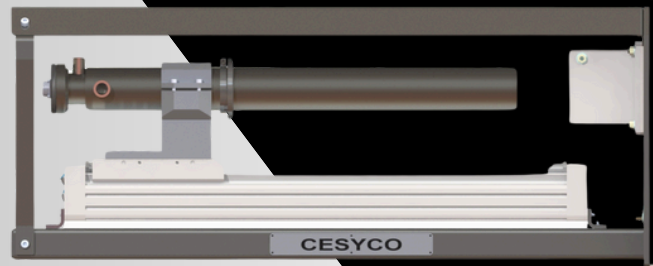
The choice of field depends on the area to be analyzed and the inspection requirement.



Equipment:

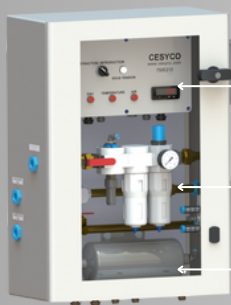
EXTRACTOR BENCH

Safety device that automatically removes the endoscope in the event of malfunctioning cooling systems.



ELECTRICAL CABINET

With bench



Signal management

Fluid management

Air reservoir

Fluid and video signal management. Activates an alarm in the event of a cooling system failure.

ELECTRICAL BOX

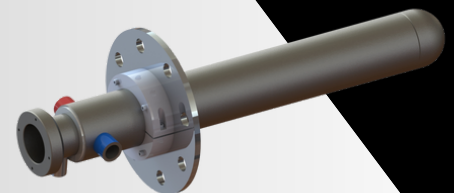
Indispensable



Efficient signal transmission through RJ45 (or HDMI) cables facilitates high-quality real-time inspections.

MOUNTING FLANGE

Optional



Clamping flange designed to secure the endoscope. This can be tailored to meet your specific requirements.

Technologies	Image transmission	IP digital video
	Cooling system	Triple-envelope sheath
	Lighting	Axial LED
Operating temperature	Up to 1,400 degrees Celsius	
Dimensions	Diameter	78 mm
	Length	500 to 4,000 millimeters
	Weight	from 6 kilograms
Cooling system	Water	Vortex (closed loop)
	Air	Venturi (lost)
Internal IP camera	Valuable pixels	1920x1080
	Resolution	1080p
Vision	Axe	0°
	FOV	60° or 90°
Focus	Adjustment tool	From 100 mm
Connections	Inlet/Outlet	Water: BSP 1/2"
		Air: BSP 3/8"
	Electrical enclosure	100 to 250 VAC 50/60Hz
		RJ45 video output
Accessories	Control and security	Electrical box or cabinet
		Extractor bench
		Flange and thermal shield